

inserts:		page
CD	15, 25 poles + ⊕	41-42
CDD	38 poles + ⊕	54
CDA	10, 16 poles + ⊕	66÷68
CDC	10, 16 poles + ⊕	67÷69
MIXO	1 module	137-151

insert centre distance:
49.5 x 16 mm
66 x 16 mm

adaptor plates for insert mounting



levers for coupling with metallic enclosures



description	part No.	part No.
mounting on COB series articles (see below) for 1 insert with screw fixing centre distance of 49.5 x 16 mm	CR 15/16	
mounting on COB series articles (see below) for 1 insert with screw fixing centre distance of 66 x 16 mm	CR 25/16	
kit with 2 elements, to be mounted instead of the standard levers to be coupled with: COB TCQ and COB...BC ¹⁾		COB L

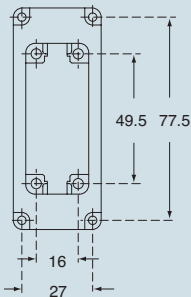
Adaptor plates

- allow the inserting of inserts of "49.16" and "66.16" on the following COB articles:
 COB TCQ, COB 16 BC, COB TSF, COB TSFS, COB 16 CMS

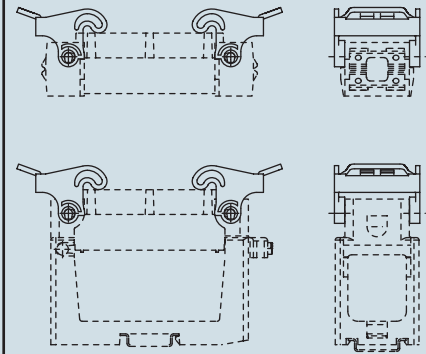
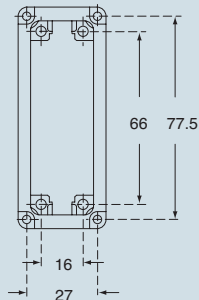
¹⁾ They allow the mounting of aluminium hoods with 4 pegs, size 55.27, 77.27 and 104.27

dimensions in mm

CR 15/16



CR 25/16



dimensions indicated are not binding and may be changed without notice