

inserts:

- CXL 2/4 PF**page 287
- CXL 2/4 PFH**page 287
- CXL 2/4 PM**page 287
- CXL 2/4 PMH**page 287
- CXL PF**page 287
- CXL PM**page 287

CJ KMfrom page 278

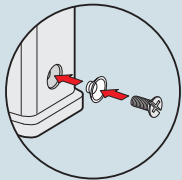
hoods



description	part No. (entry - Pg 11)	part No. (entry - M 20)
with pegs and gasket, top entry	CKG 03 VN (black)	MKG VN20 (black)
with pegs and gasket, side entry	CKG 03 VAN (black)	MKG VAN20 (black)

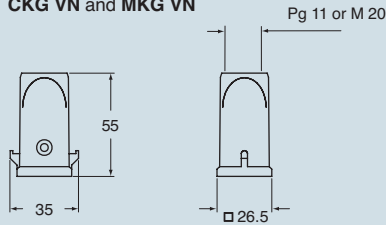
Note:

CXL and CJ K inserts are already supplied with seal and screw, which ensure IP66/IP67 protection rating.

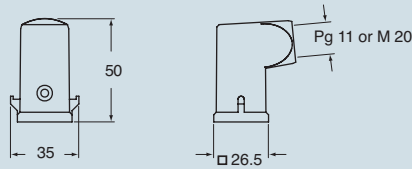


dimensions in mm

CKG VN and MKG VN



CKG VAN and MKG VAN



dimensions indicated are not binding and may be changed without notice