

CNE - CSE 10 poles + ⊕ 16A - 500V



enclosures: **size "57.27"**

- standard** page: 184 ÷ 188
- for 180 °C** page: 194
- aggressive environments** page: 195
- EMC** page: 196

panel supports:

COB page: 258 ÷ 259

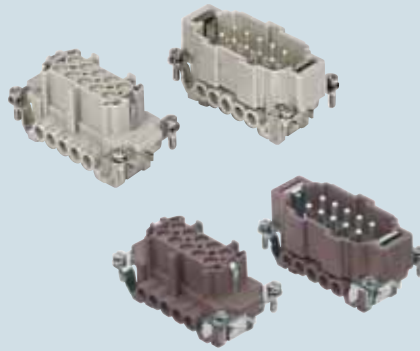
- features according to EN 61984:

16A 500V 6kV 3

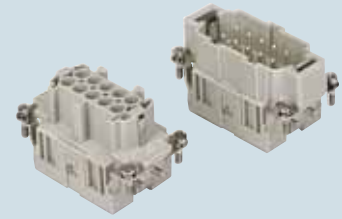
- UL, CSA, CCC, GL certified

- for maximum current load, see the insert load curve section on page 31

inserts, screw terminal connections



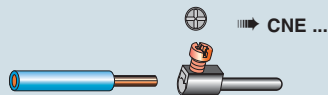
inserts, spring terminal connections



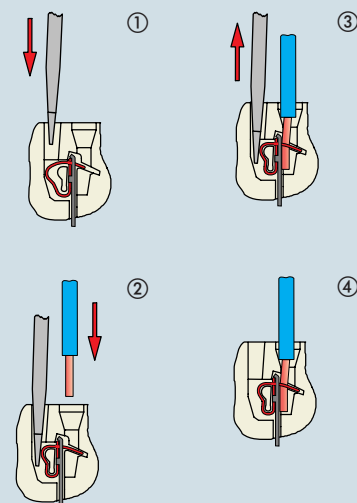
description	part No.	part No.
indirect, with plate 1) female inserts with female contacts male inserts with male contacts	CNEF 10 T CNEM 10 T	
direct, without plate 2) female inserts with female contacts male inserts with male contacts	CNEF 10 TX CNEM 10 TX	
indirect, with plate 1), use in up to 180 °C female inserts with female contacts, brown male inserts with male contacts, brown	CNEF 10 RYT * CNEM 10 RYT *	
spring terminal female inserts with female contacts male inserts with male contacts		CSEF 10 CSEM 10

- 1) for non-prepared conductors
- 2) for bush terminal conductors

* CNE...RY version without plastic wire insertion guide cover available on request.

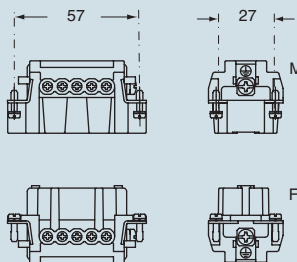


connection with spring terminal

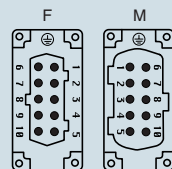


dimensions indicated are not binding and may be changed without notice

dimensions in mm

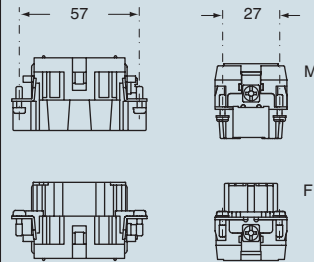


contacts side (front view)

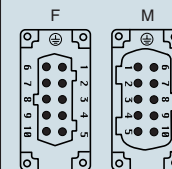


- inserts with plate, for section conductors: 0.5 ÷ 2.5 mm² - AWG 20 ÷ 14
- inserts without plate, for section conductors: 0.25 ÷ 2.5 mm² - AWG 24 ÷ 14
- torsion couple recommended for conductor fastening screws and stripping length see section feature of inserts on page 13

dimensions in mm



contacts side (front view)



- inserts for section conductors: 0.14 ÷ 2.5 mm² - AWG 26 ÷ 14
- stripping length see section feature of inserts on page 13